

Top Stories This Week

- Maruti Suzuki to hike prices of all models in range of 2-4 percent from January due to rising input costs.
- Apollo Hospitals to invest Rs 150 crore in Karnataka by FY16: FE
- State Bank of Travancore Board has approved the Draft Letter of Offer for the Bank's Rights Issue. To be filed with SEBI for their approval.
- Steel Ministry directs NMDC to aim iron ore production of 75 million tonne per annum (mtpa) by FY19
- SKS Microfinance issued commercial papers of an aggregate amount of Rs 70 crore on December 16: ET
- ONGC has awarded a euro 100 million contract to French firm Technip to build an oil and gas terminal at Odalarevu in Andhra.
- Adani Group's Australian subsidiary signs an MOU with a South Korean steel giant POSCO for the construction of a new strategic terminal: ET
- Mahindra Partners, the emerging business arm of the diversified conglomerate Mahindra Group, is in talks to acquire online portal BabyOye: ET
- HDFC shareholders have approved raising up to 200 bln rupees.

Weekly Indices Change

Index	Close	P. Close	Chg. (%)
SENSEX	27371	27350	0.08
NIFTY	8225	8224	0.01
MIDCAP	10000	10108	-1.07
SMLCAP	10922	11068	-1.32
METAL	10617	10577	0.38
OIL&GAS	9988	9800	1.92
AUTO	18360	18674	-1.68
TECK	5808	5695	1.98
BANDEX	21145	20975	0.81
IT	10560	10296	2.56
FMCG	7709	8117	-5.03
HC	14399	14946	-3.66
PSU	8083	7978	1.32
CD	9490	9566	-0.79
POWER	2025	2011	0.70
CG	15388	15226	1.06
REALTY	1498	1590	-5.79

Global Indices

DOW	17804	17280	3.03
NASDAQ	4765	4653	2.41
FTSE	6545	6300	3.89
NIKKEI	17621	17371	1.44
HANGSENG	23116	23249	-0.57

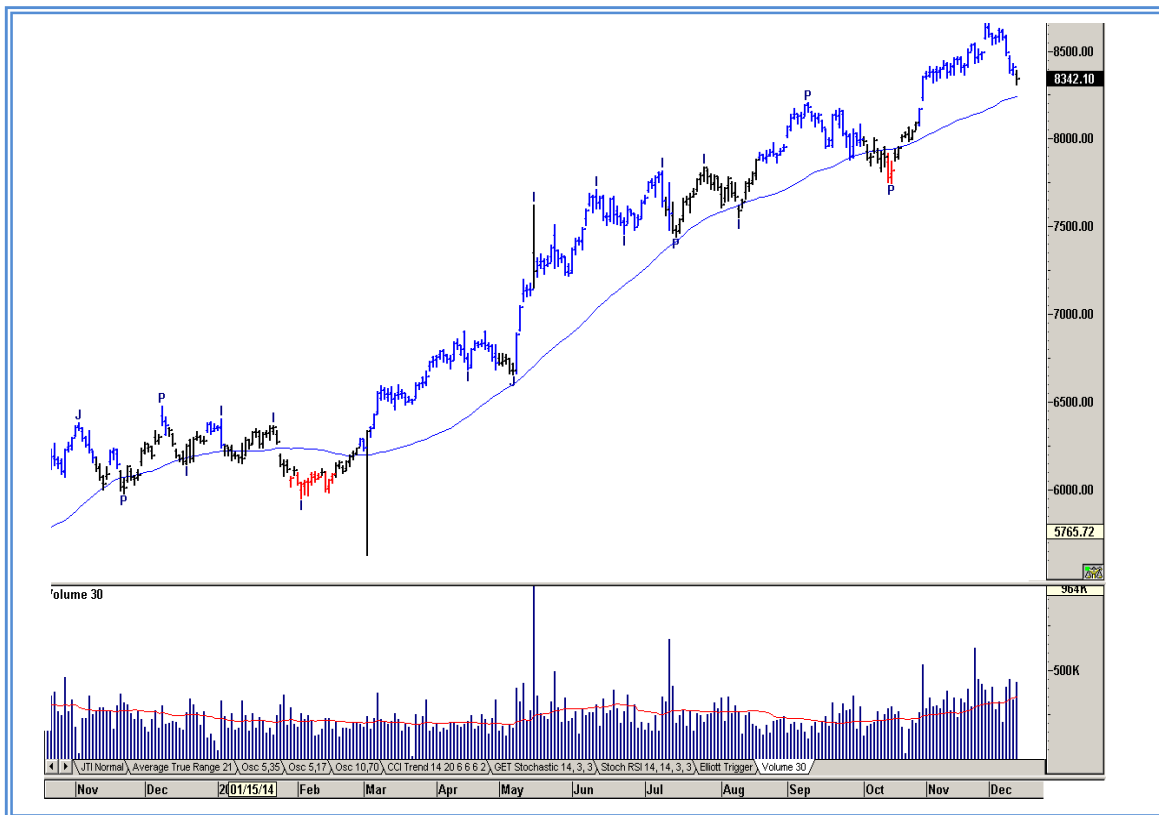
Top Gainers Weekly

Scrip	Price	% Chg
KPIT Technologies	204.75	12.41
PTC India Financial	63.25	11.16
JSW Energy Ltd.	102.10	8.79
Persistent Systems	1623.10	8.43
CARE	1470.05	6.35

Top Losers Weekly

Scrip	Price	% Chg
HCL Infosystem	44.75	18.71
PC Jeweller Ltd.	195.30	15.89
DLF Ltd.	132.00	15.33
Amtek Auto Ltd.	176.95	13.98
Wockhardt Ltd.	913.60	13.15

Nifty Corner



Support & Resistance						
S3	S2	S1	Nifty	R1	R2	R3
8050	8100	8150	8225	8260	8300	8350
Moving Averages						
20DMA		50DMA		100DMA		200DMA
8485		8250		8055		7525

Market Commentary

Key benchmark indices ended on a flat note in the week ended Friday, 19 December 2014. Market slumped in the first three trading sessions of the week as prospects of higher interest rates in the United States and a sharp fall in global crude oil prices weighed on sentiment. Losses were, however, wiped off in the last two trading sessions of the week driven by a broad-based rally, mirroring gains in global equity markets, triggered by signals from the Federal Open Market Committee that the US central bank isn't in a hurry to raise interest rates in the United States. The barometer index, the S&P BSE Sensex, reclaimed the psychological 27,000 mark after slipping below that level during the week. Small and mid-cap shares tumbled in a broad-based sell off. The S&P BSE Sensex rose 0.08% to 27,371. The 50-unit CNX Nifty rose 0.01% to 8,225. For the next week Nifty likely to trade in the range between 8300 – 8350 in the upper side and 8100 – 8050 in the lower side.

Stocks at 52 wk High

Scrip	Cmp
Amara Raja Batt	796.65
DCB Bank	110.65
JK Tyre & Ind	102.10
Maruti Suzuki	3359.40
Mastek	376.65

Stocks at 52 wk Low

Scrip	Cmp
DB (Int) Stock	60.45
Monte Carlo	567.30
Parsvnath	16.15
--	--
--	--

FII Activity

Date	Figures in crore
15/12	-455.72
16/12	-1247.24
17/12	-1636.36
18/12	-874.89
19/12	-668.85
Total	-4884.06

DII Activity

Date	Figures in crore
15/12	136.02
16/12	534.60
17/12	1423.83
18/12	648.17
19/12	622.77
Total	3365.39

Weekly Stock Idea

Scrip	B/S	Cmp	Tgt
DREDGCORP	B	418	465
WIPRO	B	552	585
HCLTECH	B	1590	1650
KPIT	B	205	225
JUSTDIAL	B	1339	1410

Buy on dips & Sell on rise with Stop-loss of 3%

Volume Breakout Stocks

Scrip	Cmp
Liberty Shoes	266.65
Financial Tech	203.15
Punj Lloyd	37.90
NCC	83.65
JSW Energy	102.10

Week Ahead

MAJOR RESULTS/AGM MEETING THIS WEEK:

22 DEC: ATLASCYCLE, SITASHREE, GODREJCP, ELDERPHARM, LYKALABS

23 DEC: ORBITCORP

24 DEC: AMTEKINDIA, AMTEKAUTO

VISIT US AT: WWW.INDIRATRADE.COM

Disclaimer

This report is for private circulation within the Indira Group. This report is strictly confidential and for information of the selected recipient only and may not be altered in any way, transmitted to, copied or distributed, in part or in whole, to any other person or to the media or reproduced in any form. This report should not be construed as an offer or solicitation to buy or sell any securities or any interest in securities. It does not constitute a personal recommendation or take into account the particular investment objectives, financial situations, or any such factor. The information, opinions estimates and forecasts contained here have been obtained from, or are based upon, sources we believe to be reliable, but no representation of warranty, express or implied, is made by us to their accuracy or completeness. Opinions expressed are our current opinions as of the date appearing on this material only and are subject to change without notice.